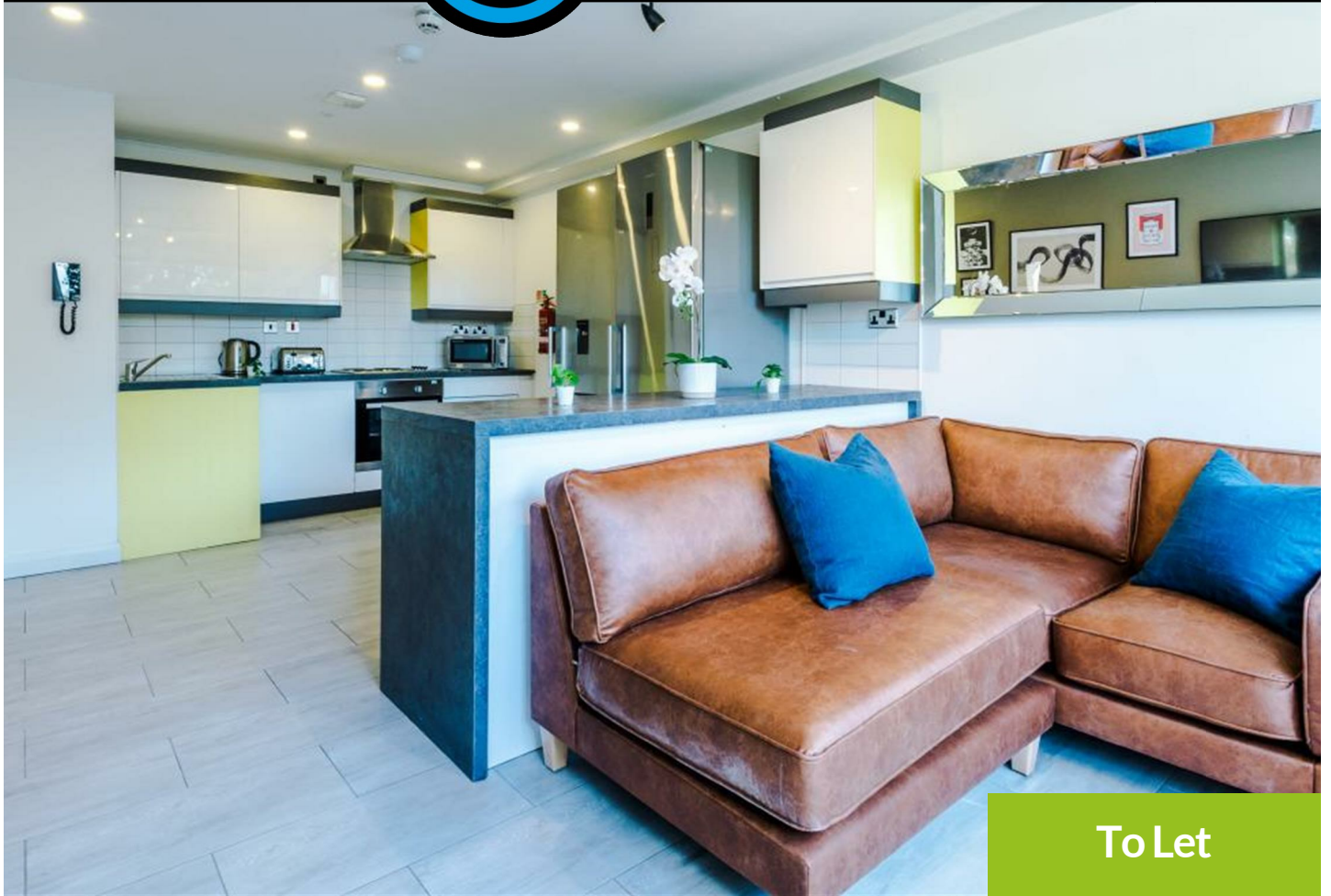




**WALTON  
ROBINSON**



**To Let**

## Flat 12B Jesmond View, NE2 4DY

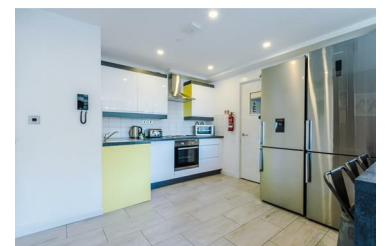
£2,715 Per Month



Flat 12, B Jesmond View located in the highly sought-after Jesmond area of Newcastle is an attractive 5 bedroom property for let for the coming year. Flat 12, B Jesmond View boasts 5 well furnished double bedrooms, chair and desk and a good amount of storage for your belongings. This large property also boasts fantastic shared spaces including, a spacious kitchen with up-to-date appliances plus a dining table to eat at with your housemates. This leads onto the large lounge open-plan complete with a large flat screen TV and super comfortable seating, making this the perfect home to live in with friends. Living in Flat 12, B Jesmond View ensures you will have a property with a comfortable and well-equipped bedroom to study and rest, plus unbeatable communal spaces to socialise and relax in after a hard day on campus.

Jesmond View is the perfect for both international and domestic students because as well as being a very social and secure block with 24hr CCTV it is also ideally located only 4 minutes away from the nearest tube station and just 12 minutes by foot to The University of Northumbria and just a 13 minute walk to Newcastle University making getting to the City Centre and campus even easier!

- £125 PPPW / £2,715 PCM
- £200 Holding Fee - Deducted from 1st Months Rent
- In House Maintenance
- Modern Finish Throughout
- SUPERFAST WIFI
- TV Licence, water, internet, hot water included
- Fantastic Location
- Available 04/08/2023 - 26/07/2024
- 2 Shower Rooms
- 24/7 PHONE SUPPORT



101 Percy Street, City Centre, Newcastle upon Tyne, NE1 7RY  
T: 01912431000 | Email: [enquiries@waltonrobinson.com](mailto:enquiries@waltonrobinson.com) | [www.waltonrobinson.com](http://www.waltonrobinson.com)